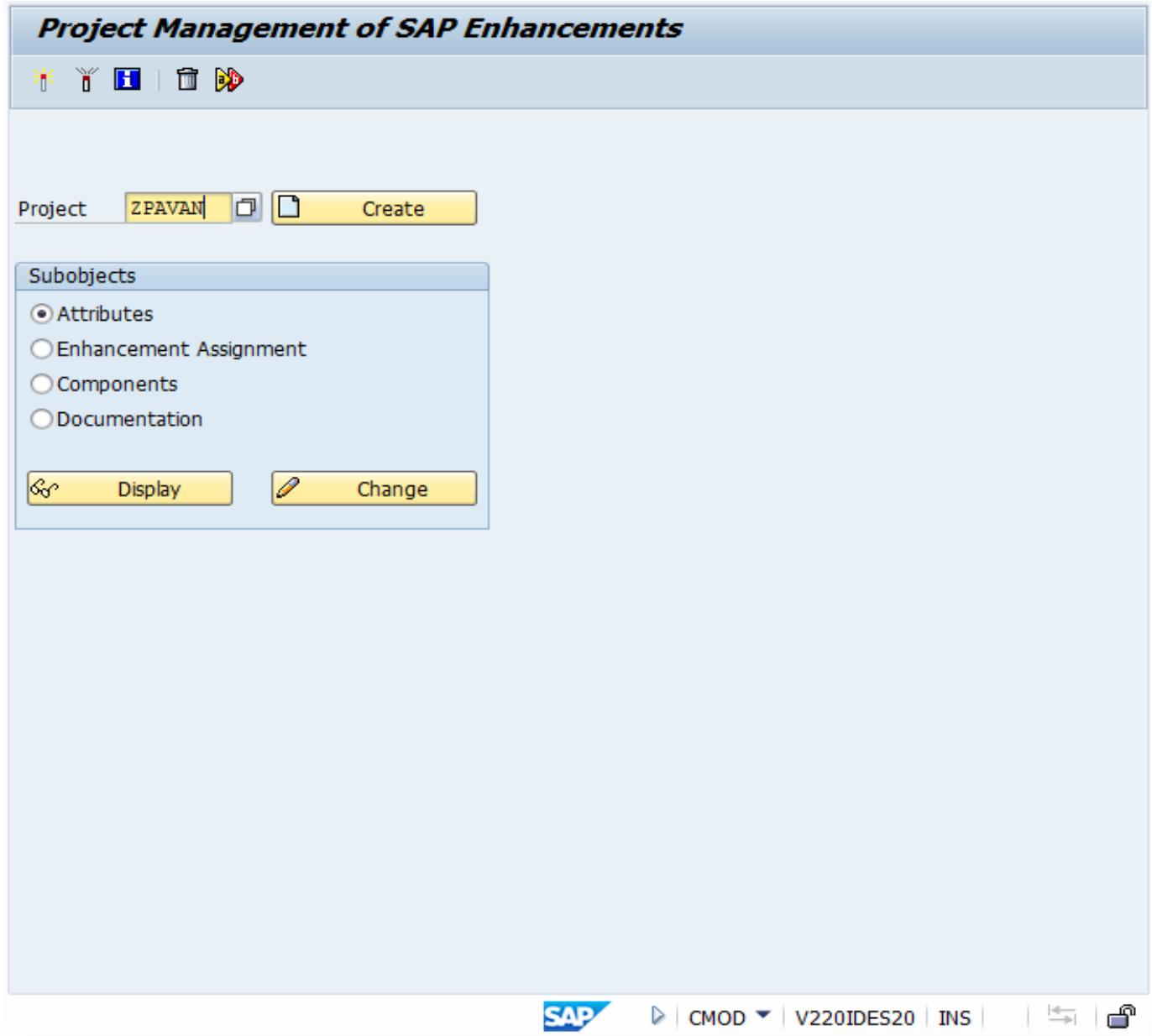


[MENU EXIT for transaction Code: SE41. By Pavan Golesar](#)

Details: We will call transaction code SE80 from SE41 transaction via providing a menu exit in 'UTILITIES'.

Imp: Menu Enhancement for MENU PAINTER is **SEUMP002**

1. Goto transaction code CMOD & create a project e.g. zpavan.



Give some 'Short Text' & Click on '*Enhancement Assignment*' on application toolbar.

Attributes of Enhancement Project ZPAVAN

✎ | Enhancement assignments Components

Project ZPAVAN

Short text Pavan's Enhancement exercise for MENU EXIT on Menu Painter

Administrative Data

Package

Original language

Created by

Last changed on/by

Activation

Project Status

Changed

Enter **SEUMP002** in Enhancement.

SAP Enhancements in Enhancement Project ZPAVAN

✎ | 📄 | 🗨 | 🖨 | i Enhancement Components

Enhancement Text

<input type="text" value="SEUMP002"/>	<input type="text" value="Exit Menu Painter"/>
<input type="text"/>	<input type="text"/>
<input type="text"/>	<input type="text"/>
<input type="text"/>	<input type="text"/>



Press on *Components* it will take you to following screen.

Double click on Menu Exit **(+OBB)**

Give new name at function Text you want to show in that menu. Example in this example we are using SE80 for Menu Exit.

The screenshot displays the SAP 'Change ZPAVAN' interface. At the top, there is a title bar 'Change ZPAVAN' and a toolbar with icons for enhancement assignments and enhancement. Below the toolbar is a table with the following data:

Project				ZPAVAN Project - Menu Exit for Menu Painter
Enhancement	Impl		Exp	SEUMP002 Exit Menu Painter
Function exit				EXIT_SAPLSMPE_001 EXIT_SAPMSMPE_001
Menu exit				SAPLSMPE +OBB

Below the table, a detailed view of the 'Menu exit' is shown. The fields are:

- Function Code: +OBB
- Language: EN English
- Function text: Menu Exit for Object Navigator
- Icon: ICON_OKAY ✓
- Icontext: (empty)
- Info. text: (empty)

At the bottom of the detailed view, there are buttons for 'Copy', 'Other Language', and a close button (X).

The SAP status bar at the bottom shows 'SAP' logo, 'CMOD', 'V220IDES20', 'INS', and other system information.



Click **Copy**.

Now double click on Function exit **EXIT_SAPMSMPE_001**.

Change ZPAVAN				
Enhancement assignments Enhancement				
Project				ZPAVAN Project - Menu Exit for Menu Painter
Enhancement	Impl		Exp	SEUMP002 Exit Menu Painter
Function exit				EXIT_SAPLSMPE_001 EXIT_SAPMSMPE_001
Menu exit				SAPLSMPE +OBB

Following screen appears:

```

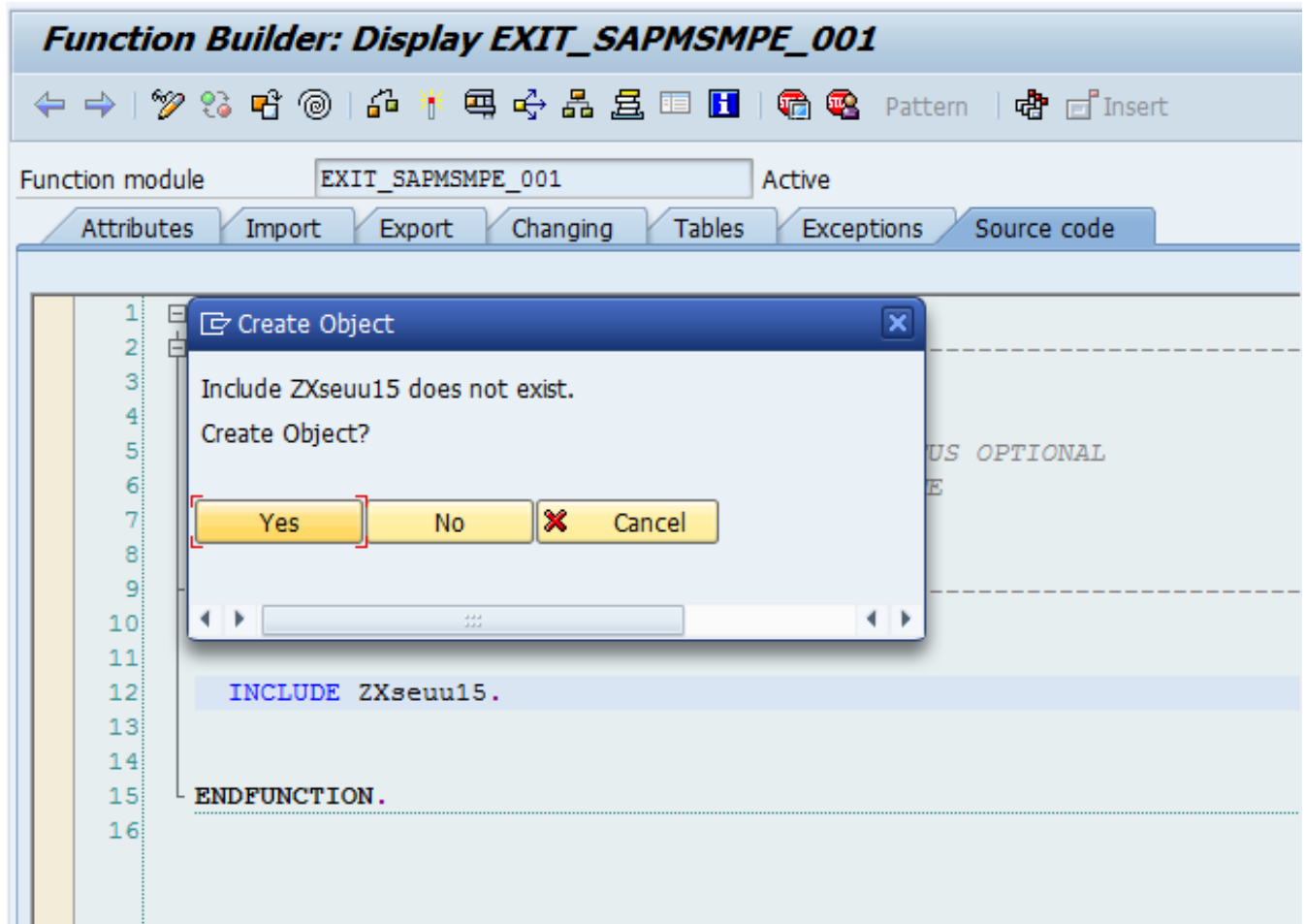
1  FUNCTION EXIT_SAPMSMPE_001.
2  *-----
3  *""Lokale Schnittstelle:
4  *      IMPORTING
5  *          VALUE (OBJECT) LIKE RSEU1-STATUS OPTIONAL
6  *          VALUE (PROGRAM) LIKE TRDIR-NAME
7  *      EXCEPTIONS
8  *          CANCELLED
9  *-----
10
11
12  INCLUDE 2Xseuu15.
13
14
15  ENDFUNCTION.
16

```

SAP | CMOD | V220IDES20 | INS



Double Click on **ZXseuu15**, Create the object.(Note: This step of creating object might be bypassed by system is the INCLUDE Zxseuu15 is already existing, Rest remains the same).



Code in the Include. Once done **activate** the Include.

ABAP Editor: Change Include ZXSEUU15

Include: ZXSEUU15 Active

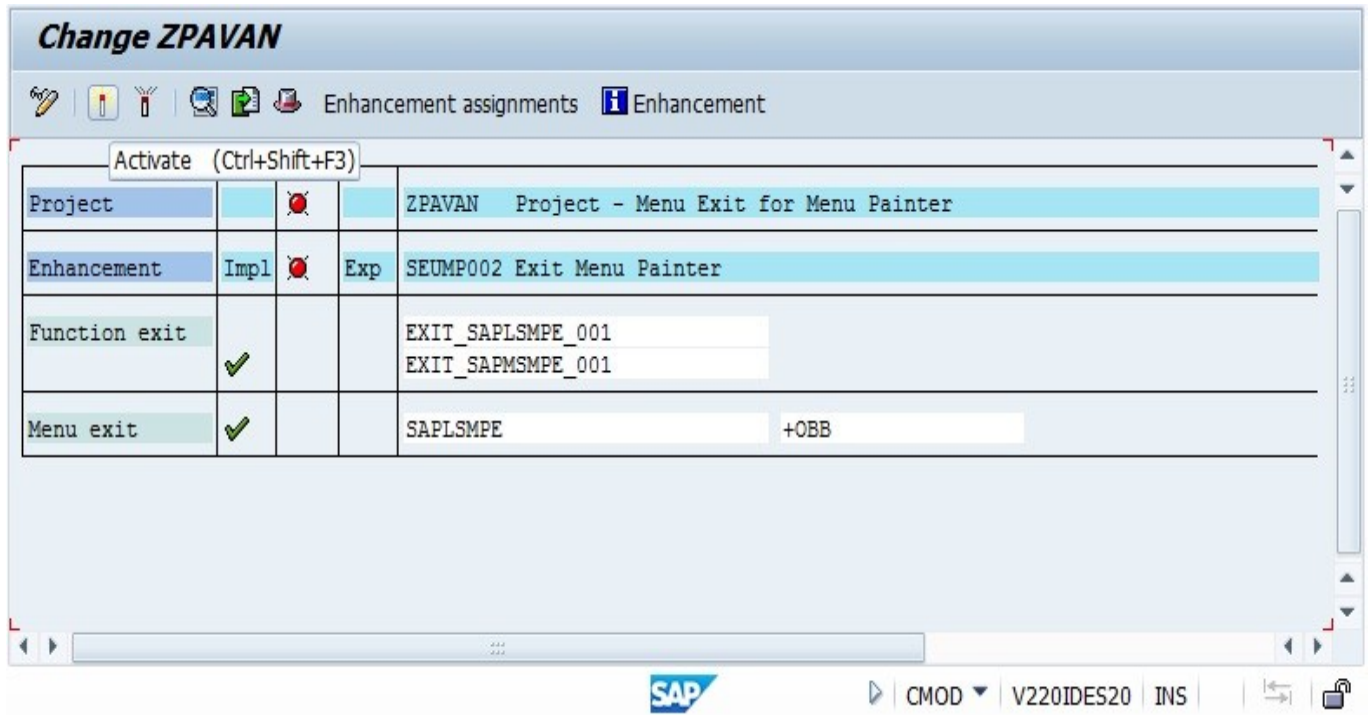
```
1  *-----*
2  *& Include          ZXSEUU15
3  *-----*
4
5  CALL TRANSACTION 'SE80'.      " ENTER TRANSACTION YOU USER TO GOTO ON CLICK
```

ABAP Ln 5 Col 24

SAP CMOD V220IDES20 INS



Go back and **activate** the PROJECT.



Change ZPAVAN

Enhancement assignments Enhancement

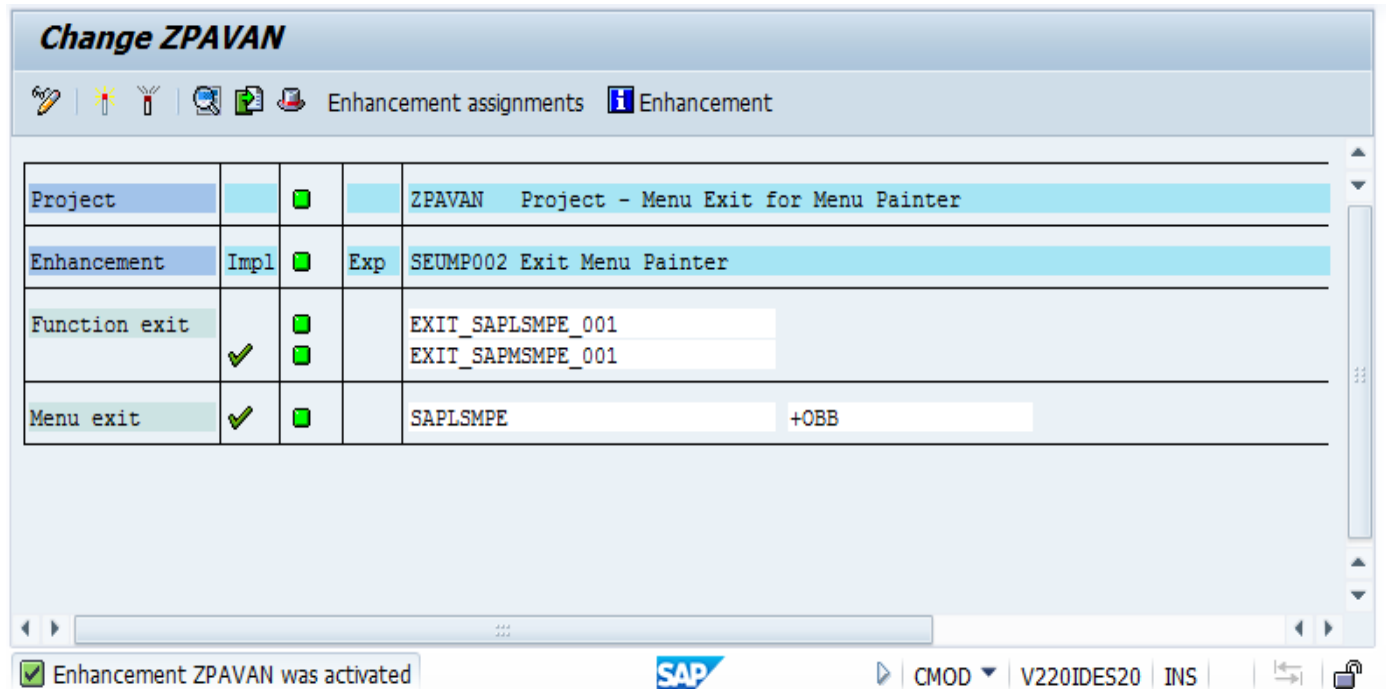
Activate (Ctrl+Shift+F3)

Project		⊗		ZPAVAN Project - Menu Exit for Menu Painter
Enhancement	Impl	⊗	Exp	SEUMP002 Exit Menu Painter
Function exit	✓			EXIT_SAPLSMPE_001 EXIT_SAPMSMPE_001
Menu exit	✓			SAPLSMPE +OBB

SAP CMOD V220IDES20 INS

On successfully activation of project, it should look like:

Note: **Ensure all Green Lights.**



Change ZPAVAN

Enhancement assignments Enhancement

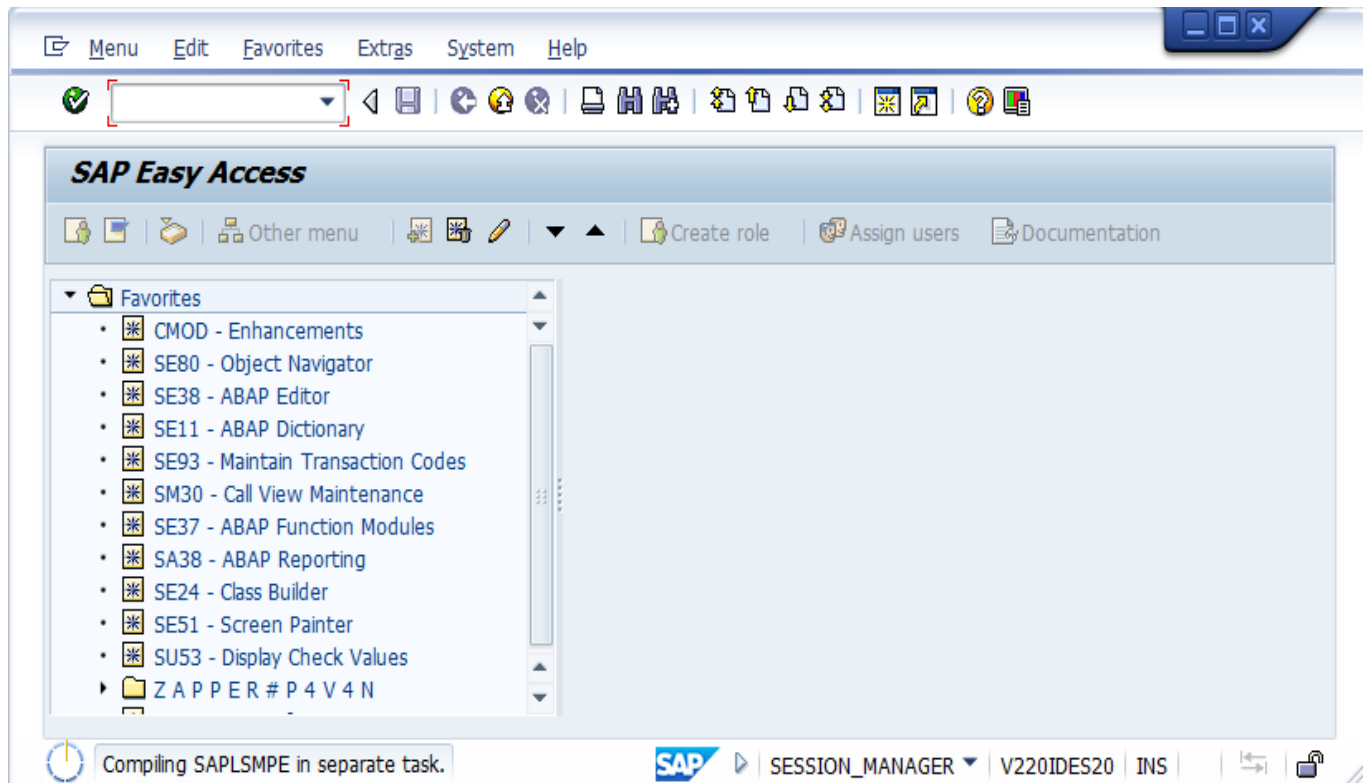
Project		⊗		ZPAVAN Project - Menu Exit for Menu Painter
Enhancement	Impl	⊗	Exp	SEUMP002 Exit Menu Painter
Function exit	✓	⊗		EXIT_SAPLSMPE_001 EXIT_SAPMSMPE_001
Menu exit	✓	⊗		SAPLSMPE +OBB

Enhancement ZPAVAN was activated

SAP CMOD V220IDES20 INS

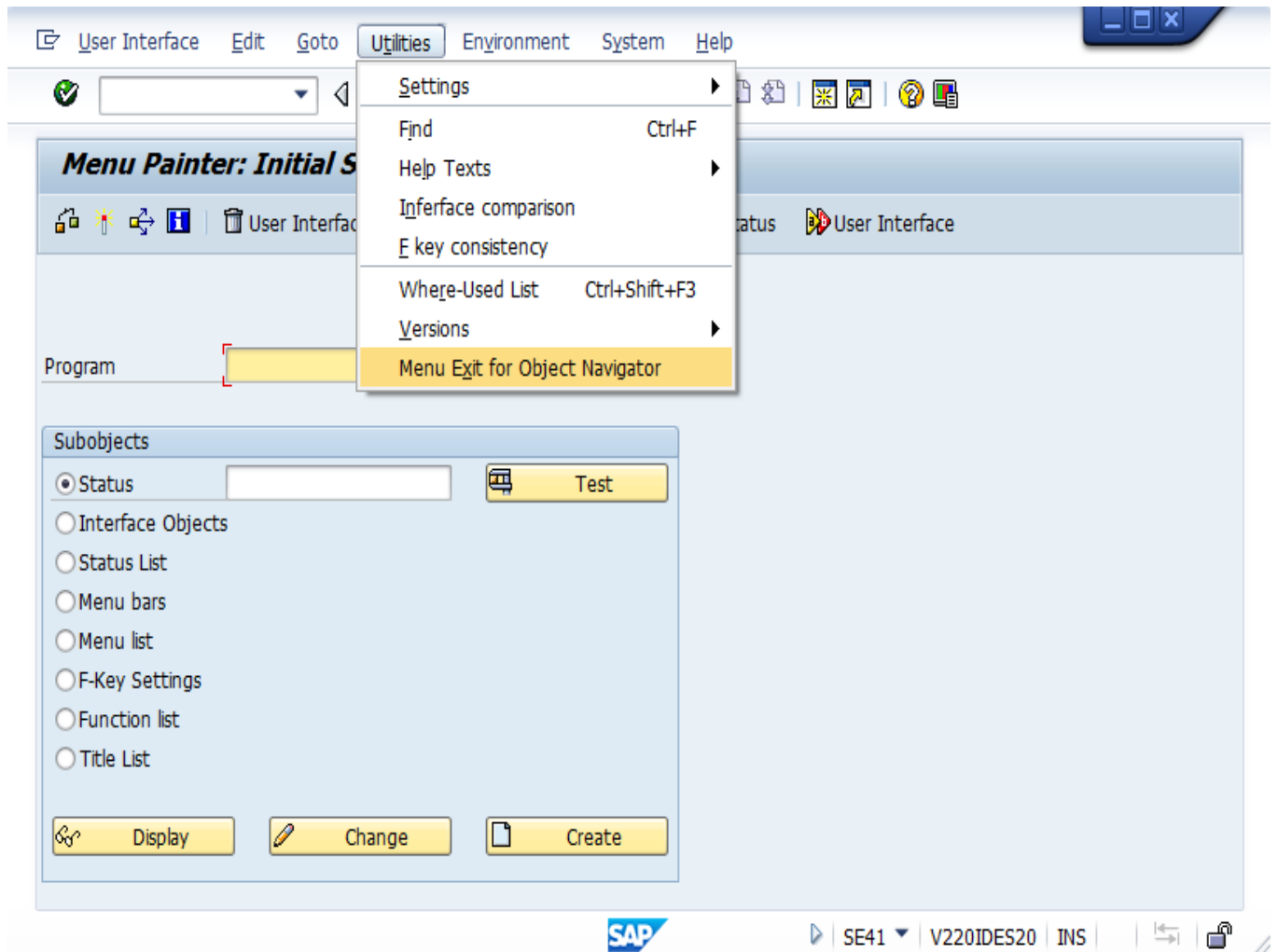


Now Go to 'SE41' and notice at status, that's reason of our new code getting processed.



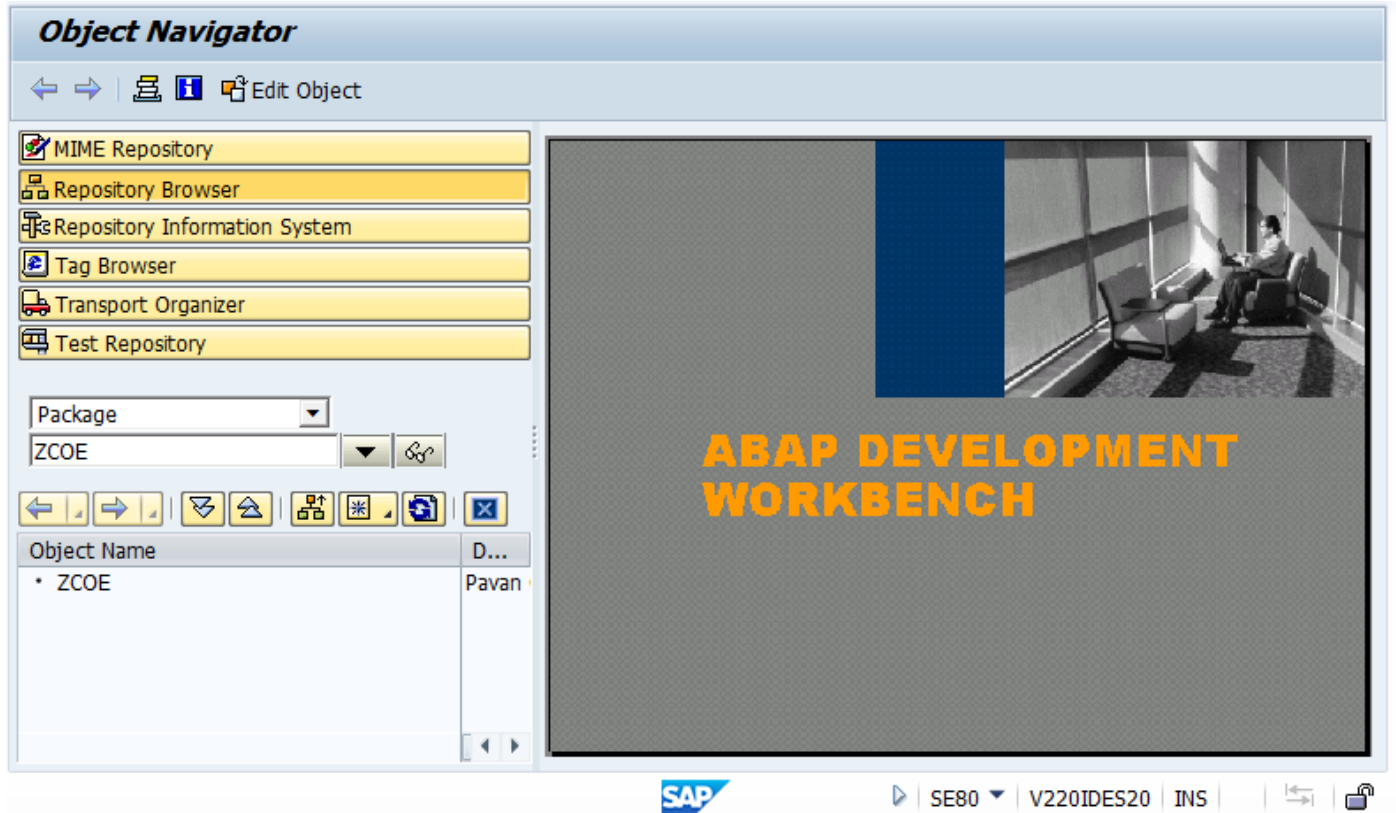
Notice: In UTILITIES> Menu Exit for Object Navigator.





We are directed to SE80.





Enjoy Enhancing SAP 😊

Regards,

Pavan Golesar.

SAP ABAP CERTIFIED Consultant.

