

TABLES IN SAP

<b>1</b>	<b>PRODUCTION PLANNING (PP)</b> .....	<b>3</b>
1.1	WORK CENTER .....	3
1.2	ROUTINGS/OPERATIONS .....	3
1.3	BILL OF MATERIAL .....	3
1.4	PRODUCTION ORDERS .....	3
1.4.1	<i>Tables diagram for production orders</i> .....	4
1.5	PRT'S VOOR PRODUCTION ORDERS.....	4
1.6	PLANNED ORDERS .....	4
1.7	KANBAN.....	5
1.8	RESERVATIONS .....	5
1.9	CAPACITY PLANNING .....	5
1.10	PLANNED INDEPENDENT REQUIREMENTS .....	5
1.11	ORDER'S STATUS .....	5
1.12	ORDER'S STATUS CHECK .....	6
1.12.1	<i>FUNCTION 'STATUS_TEXT_EDIT'</i> .....	6
1.12.2	<i>CALL FUNCTION 'STATUS_READ'</i> .....	6
1.12.3	<i>FUNCTION STATUS_NUMBER_CONVERSION</i> .....	7
<b>2</b>	<b>MATERIAL MANAGEMENT (MM)</b> .....	<b>8</b>
2.1	MATERIAL DOCUMENT.....	8
2.2	PURCHASING.....	8
<b>3</b>	<b>PLANT MAINTENANCE (PM)</b> .....	<b>8</b>
<b>4</b>	<b>PROJECT SYSTEM (PS)</b> .....	<b>8</b>
4.1	BASIC DATA .....	8
4.2	EQUIPMENT.....	8
<b>5</b>	<b>QUALITY MANAGEMENT (QM)</b> .....	<b>8</b>
5.1	INSPECTION LOT / INFO RECORD .....	8
5.2	QUALITY NOTIFICATION.....	9
5.3	CERTIFICATE PROFILE .....	9
<b>6</b>	<b>MASTER DATA</b> .....	<b>9</b>
6.1	MATERIAL MASTER:.....	9
6.1.1	<i>Basic data text (sap script)</i> .....	9
6.1.2	<i>Batches</i> .....	10
6.2	CUSTOMER MASTER DATA .....	10
6.3	VENDOR.....	10
6.4	CUSTOMER – MATERIAL INFO RECORD.....	10
6.5	BANK DATA .....	10
<b>7</b>	<b>CUSTOMISING</b> .....	<b>11</b>
7.1	GENERAL SETTINGS .....	11
7.1.1	<i>Countries</i> .....	11
7.1.2	<i>Currency</i> .....	11
7.1.3	<i>Unit of measure</i> .....	11
7.1.4	<i>Calendar functions</i> .....	11
7.2	ENTERPRISE STRUCTURE.....	11
7.2.1	<i>Definition</i> .....	11
7.2.2	<i>Assignment</i> .....	11
7.3	FINANCIAL ACCOUNTING .....	12
7.3.1	<i>Company code</i> .....	12
7.3.2	<i>Fi document</i> .....	12
7.4	NOT CATEGORIZED .....	12

## TABLES IN SAP

---

<b>8</b>	<b>CHARACTERISTICS .....</b>	<b>12</b>
8.1	CHARACTERISTICS : .....	12
8.2	CLASS TYPES AND OBJECTS : .....	12
8.3	LINKS : .....	13
<b>9</b>	<b>BASIC DATA / ADMINISTRATION .....</b>	<b>13</b>
9.1	WORKBENCH RELATED TABLES .....	13
9.1.1	Data dictionary tables .....	13
9.1.2	Workbench.....	13
9.2	ADMINISTRATION .....	13
9.2.1	User administration.....	13
9.2.2	Batch input queue .....	13
9.2.3	Job processing.....	13
9.2.4	Spool.....	14
9.2.5	Runtime errors.....	14
9.2.6	Message control .....	14
9.2.7	EDI .....	14
9.2.8	Change documents .....	14
9.2.9	Reporting tree table.....	14
9.2.10	LIS structure/control tables .....	14
9.3	SETTINGS .....	14
9.4	MASTER DATA .....	14
9.5	INFOTYPES .....	14
<b>10</b>	<b>FI/CO .....</b>	<b>15</b>
10.1	FI: .....	15
10.1.1	Master data .....	15
10.1.2	Accounting documents // indices .....	15
10.1.3	Payment run .....	15
10.2	CO: .....	15
10.2.1	Cost center master data.....	15
10.2.2	Cost center accounting.....	15
<b>11</b>	<b>SALES AND DISTRIBUTION (SD) .....</b>	<b>15</b>
11.1	SALES ORDER : .....	15
11.2	BILLING DOCUMENT : .....	16
11.3	SHIPPING : .....	16
11.4	DELIVERY : .....	16
11.5	PRICING : .....	16
11.6	CONTRACTS : .....	16
<b>12</b>	<b>WAREHOUSE MANAGEMENT (WM) .....</b>	<b>17</b>
12.1	TRANSFER REQUIREMENT .....	17
12.2	TRANSFER ORDER .....	17
12.3	MASTER DATA - STOCK POSITIONS .....	17
12.4	INVENTORY DOCUMENTS IN WM .....	17

## 1 Production Planning (PP)

### 1.1 Work center

CRHH	Work center hierarchy
CRHS	Hierarchy structure
CRHD	Work center header
CRTX	Text for the Work Center or Production Resource/Tool
CRCO	Assignment of Work Center to Cost Center
KAKO	Capacity Header Segment
CRCA	Work Center Capacity Allocation
TC24	Person responsible for the workcenter
CRC	Logical DB for Work centers

### 1.2 Routings/operations

MAPL	Allocation of task lists to materials
PLAS	Task list - selection of operations/activities
PLFH	Task list - production resources/tools
PLFL	Task list - sequences
PLKO	Task list - header
PLKZ	Task list: main header
PLPH	Phases / suboperations
PLPO	Task list operation / activity
PLPR	Log collector for tasklists
PLMZ	Allocation of BOM - items to operations

### 1.3 Bill of material

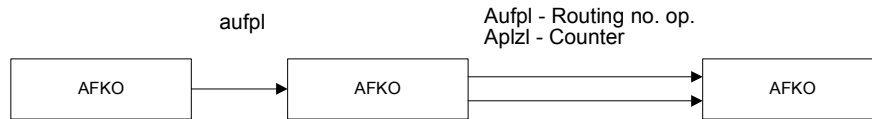
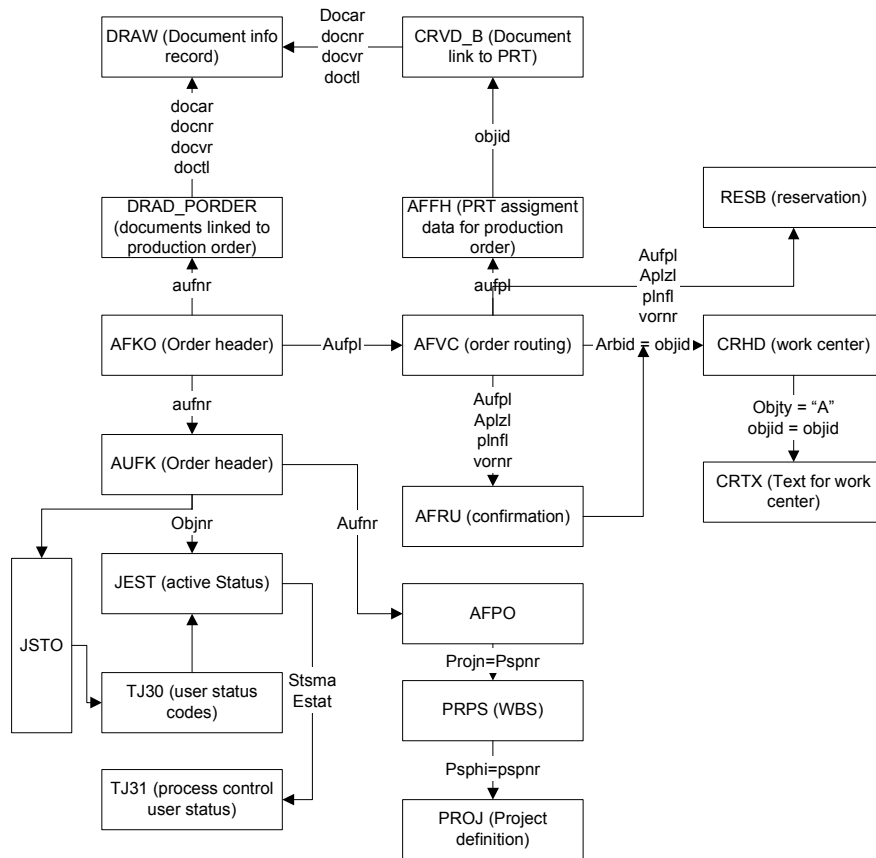
STKO	BOM - header
STPO	BOM – item כל הפריטים במספר פנימי מסויים
STAS	BOMs - Item Selection כל הפריטים באלטרנטיבה מסויימת
STPN	BOMs - follow-up control
STPU	BOM - sub-item
STZU	Permanent BOM data
PLMZ	Allocation of BOM - items to operations
MAST	Material to BOM link
KDST	Sales order to BOM link

### 1.4 Production orders

AUFK	Production order headers
AFIH	Maintenance order header
AUFM	Goods movement for prod. order
AFKO	Order header data PP orders
AFPO	Order item
RESB	Order components
AFVC	Order operations - מהניתוב
AFVV	Quantities/dates/values in the operation - מהפק"ע
AFVU	User fields of the operation
AFFL	Work order sequence
AFFH	PRT assignment data for the work order (routing)
JSTO	Status profile
JEST	Object status
AFRU	Order completion confirmations

1.4.1 Tables diagram for production orders

Table Diagram For Prod. Orders (CRTD By Nisim Levy)



1.5 PRT's voor production orders

AFFH	PRT assignment data for the work order
CRVD_A	Link of PRT to Document
DRAW	Document Info Record
TDWA	Document Types
TDWD	Data Carrier/Network Nodes
TDWE	Data Carrier Type

1.6 Planned orders

PLAF	Planned orders
------	----------------

**1.7 KANBAN**

PKPS	Kanban identification, control cycle
PKHD	Kanban control cycle (header data)
PKER	Error log for Kanban containers

**1.8 Reservations**

RESB	Material reservations
RKPF	header

**1.9 Capacity planning**

KBKO	Header record for capacity requirements
KBED	Capacity requirements records
KBEZ	Add. data for table KBED (for indiv. capacities/splits)

**1.10 Planned independent requirements**

PBIM	Independent requirements for material
PBED	Independent requirement data
PBHI	Independent requirement history
PBIV	Independent requirement index
PBIC	Independent requirement index for customer req.

**1.11 Order's Status**

JEST	Object status
TJ02	System status
TJ02T	System status texts

## 1.12 Order's Status Check

כדי להריץ פונקציה יש להכנס ל SE37 , לרשום שם הפונקציה ולהפעיל ע"י F8

### 1.12.1 FUNCTION 'STATUS\_TEXT\_EDIT'

כדי לקבל סטטוס הזמנה, יש להפעיל פונקציה זו (בעזרת SE37) הפונקציה מבקשת OBJNR + SPARS (שפה = EN) ומחזירה את רשומת הסטטוס הנמצאת בכותרת הפק"ע

- את נתון OBJNR לכותרת פק"ע ניתן להשיג בטבלה [AUFK](#)
- את נתון OBJNR לפעולות בפק"ע ניתן להשיג בטבלה [AFVC](#)

הפעלה:

#### Test Function Module: Result Screen

Test for function group BSWA  
 Function module STATUS\_TEXT\_EDIT  
 Upper/lower case   
 Runtime: 46,480 Microseconds

Import parameters	Value
CLIENT	500
FLG_USER_STAT	
OBJNR	0R000000208229
ONLY_ACTIVE	
SPRAS	EN
BYPASS_BUFFER	

Export parameters	Value
ANW_STAT_EXISTING	
E_STSMA	ZPF00001
LINE	CRTD MSPT PRT PCNF PRC ILAS MACM MANC*
USER_LINE	
STONR	00

לאחר מכן ניתן להשתמש בטבלה TJ02 (או טרנזקציה BS23) לפיענוח

### 1.12.2 CALL FUNCTION 'STATUS\_READ'

```

EXPORTING
  client           = sy-mandt
  objnr           = objnr
  only_active     = 'X'
* IMPORTING
*   OBTYP          =
*   STSMA         =
*   STONR        =
TABLES
  status         = tab_status
* EXCEPTIONS
*   OBJECT_NOT_FOUND = 1
*   OTHERS        = 2
    
```

### 1.12.3 FUNCTION STATUS\_NUMBER\_CONVERSION.

```
* "-----  
---  
* " "Lokale Schnittstelle:  
* "     IMPORTING  
* "         VALUE(CLIENT) LIKE  SY-MANDT DEFAULT SY-MANDT  
* "         VALUE(LANGUAGE) LIKE  SY-LANGU  
* "         VALUE(OBJNR) LIKE  JSTO-OBJNR DEFAULT SPACE  
* "         VALUE(STATUS_NUMBER) LIKE  JEST-STAT  
* "         VALUE(STSMA) LIKE  JSTO-STSMA DEFAULT SPACE  
* "     EXPORTING  
* "         VALUE(LANGUAGE_FOUND) LIKE  SY-LANGU  
* "         VALUE(TXT04) LIKE  TJ02T-TXT04  
* "         VALUE(TXT30) LIKE  TJ02T-TXT30  
* "     EXCEPTIONS  
* "         INSUFFICIENT_INPUT  
* "         OBJECT_NOT_FOUND  
* "         STATUS_NOT_FOUND  
* "         STSMA_NOT_FOUND  
* "-----
```

Attachment 1 – Production Orders

## 2 Material Management (MM)

### 2.1 Material document

MKPF	material document
MSEG	material document (item level)

### 2.2 Purchasing

EKKO	Purchase document
EKPO	Purchase document (item level)
EKPV	Shipping-Specific Data on Stock Tfr. for Purch. Doc. Item
EKET	Delivery schedule
VETVG	Delivery Due Index for Stock Transfer
EKES	Order Acceptance/Fulfillment Confirmations
EKKN	Account assignment in purchasing
EKAN	Vendor address purchasing
EKPA	Partner functions
EIPO	Item export / import data
EINA	Purchase info record (main data)
EINE	Purchase info record (organizational data)
EORD	Source list
EBAN	Purchase requisition
EBKN	Purchase Requisition Account Assignment

## 3 Plant maintenance (PM)

IHPA	Plant Maintenance: Partners
OBJK	Plant Maintenance Object List- Equip.num
ILOA	PM Object Location and Account Assignment
AFIH	Maintenance order header
SER05	Doc. Header for S/N for PP - OrderPrOr+No. Serial No.

## 4 Project system (PS)

### 4.1 Basic data

PRHI	Work Breakdown Structure, Edges (Hierarchy Pointer)
PROJ	Project definition
PRPS	WBS (Work Breakdown Structure) Element Master Data
RPSCO	Project info database: Costs, revenues, finances
MSPR	Project stock

### 4.2 Equipment

EQUI	Equipment master data - מק"ט + מספר סידורי
EQKT	Equipment short text
EQUZ	Equipment time segment

## 5 Quality Management (QM)

### 5.1 Inspection lot / info record

QALS	Inspection lot record
QAMB	Link inspection lot - material document



QAVE	Inspection usage decision
QDPS	Inspection stages
QMAT	Inspection type - material parameters
QINF	Inspection info record (vendor - material)
QDQL	Quality level
QDPS	Inspection stages

### 5.2 Quality notification

TQ80	Notification types
QMEL	Quality notification
QMFE	Quality notification – items
QMUR	Quality notification – causes
QMSM	Quality notification – tasks
QMMA	Quality notification – activities
QMIH	Quality message - maintenance data excerpt

### 5.3 Certificate profile

QCVMT	Certificate profile characteristic level: texts
QCVM	Certificate profile characteristic level
QCVK	Certificate profile header

## 6 MASTER DATA

### 6.1 Material master:

MARA	Material master
MAKT	Material text
MARC	Material per plant / stock
MVKE	Material master, sales data
MARD	Storage location / stock
MSKA	Sales order stock
MSPR	Project stock
MARM	Units of measure
MEAN	International article number
PGMI	Planning material
PROP	Forecast parameters
MAPR	Link MARC <=> PROP
MBEW	Material valuation
MVER	Material consumption
MLGN	Material / Warehouse number
MLGT	Material / Storage type
MPRP	Forecast profiles
MDTB	MRP table
MDKP	Header data for MRP document
MLAN	Tax data material master
MTQSS	Material master view: QM
MATERIALID	External Material number W/Version selection

- In SE16-> User  
Param-> Format:  
Check Conversion  
exist – קובע אם יהיה –  
היפוך למספרים או לא
- MARA-MATNR  
Materialid\_mat לטבלה  
nr\_sel יש לקשר שדה

#### 6.1.1 Basic data text (sap script)

STXB	SAPscript: Texts in non-SAPscript format
STXH	STXD SAPscript text file header

STXL                      STXD SAPscript text file lines

**6.1.2 Batches**

MCHA                      Batches  
MCH1                      Batches  
MCHB                      Stock : batches

**6.2 Customer master data**

KNA1                      Customer master  
KNB1                      Customer / company  
KNVV                      Customer sales data  
KNBK                      Bank details  
KNVH                      Customer hierarchy  
KNVP                      Customer partners  
KNVS                      Shipment data for customer  
KNVK                      Contact persons  
KNVI                      Customer master tax indicator

**6.3 Vendor**

LFA1                      Vendor master  
LFB1                      Vendor per company code  
LFB5                      Vendor dunning data  
LFM1                      Purchasing organization data  
LFM2                      Purchasing data  
LFBK                      Bank details

**6.4 Customer – material info record**

KNMT                      Customer material info record

**6.5 Bank data**

BNKA                      Master bank data

## 7 Customising

### 7.1 General settings

#### 7.1.1 Countries

T005 Countries

#### 7.1.2 Currency

TCURC Currency codes  
 TCURR Wisselkoersen  
 TCURT Currency name  
 TCURX Decimal places for currencies.

#### 7.1.3 Unit of measure

T006 Units of measure

#### 7.1.4 Calendar functions

T247 Month names  
 TFACD Factory calendar definition  
 T015M Month names  
 TTZZ Time zones  
 TTZD Summer time rules  
 TTZDF Summer time rules (fixed annual dates)  
 TTZDV Summer time rules (variable dates)  
 TTZDT Summer time rules texts  
 TTZ5 Assign Time Zones to Countries  
 TTZ5S Assign time zones to regions

### 7.2 Enterprise structure

#### 7.2.1 Definition

<b>FI</b>	T880	Company
	T001	Company code
<b>CO</b>	TKA01	Controlling area
<b>LO</b>	T001W	Plant / sales organization
	T499S	Locations
	TSPA	Division
<b>SD</b>	TVKO	Sales organization / company code
	TVTW	Distribution channel
	TVBUR	Sales office
	TVKBT	Sales office text
	TVKGR	Sales group
	TVGRT	Sales group text
	T171T	Sales district text
<b>MM</b>	T001L	Storage locations
	T024E	Purchasing organization
	T3001	Warehouse number
	TVST	Shipping point
	TVLA	Loading point
	TTDS	Transportation

#### 7.2.2 Assignment

<b>CO</b>	TKA02	Assign company code to controlling area
<b>LO</b>	T001K	Assign plant (valuation area) to company code

<b>SD</b>	TVKO	Sales organization / company code
	TVKOV	Distribution channel / sales organization
	TVKOS	Division to sales organization
	TVTA	Sales area
	TVKBZ	Sales office to sales area
	TVBVK	Sales group to sales office
	TVKWZ	Plants to sales organization
<b>MM</b>	T024E	Purchasing organization / company code
	T024W	Plant to Purchase organization
	T001K	Link plant ( = valuation area) / company code
	TVSWZ	Shipping point to plant
	T320	Assignment MM Storage Location to WM Warehouse

### 7.3 Financial accounting

#### 7.3.1 Company code

T004	Chart of accounts
T077S	Account group (g/l accounts)
T009	Fiscal year variants
T880	Global company data
T014	Credit control area

#### 7.3.2 Fi document

T010O	Posting period variant
T010P	Posting Period Variant Names
T001B	Permitted Posting Periods
T003	Document types
T012	House banks

#### 7.4 Not categorized

T007a	Tax keys
T134	Material types
T179	Materials: Product Hierarchies
T179T	Materials: Product hierarchies: Texts
TJ02T	Status text
TINC	Customer incoterms
TVFK	Billing doc types
T390	PM: Shop papers for print control

## 8 Characteristics

### 8.1 Characteristics :

CABN	Characteristics ( o.a. batch/vendor)
CABNT	Characteristics description
CAWN	Characteristics ( o.a. material)
CAWNT	Characteristics description
AUSP	Characteristic Values

### 8.2 Class types and objects :

TCLAO	Several class types for object
TCLA	Class types ( vb. lfa1 => v10 en 010)
TCLAT	Class type text
TCLT	Classifiable objects
TCLC	Classification status

### 8.3 Links :

INOB	Link between Internal Number and Object
KLAH	Class header data
KSSK	Allocation Table: Object (vb.matnr) to Class
KSML	Characteristics for a class (internal number)

## 9 Basic data / administration

### 9.1 Workbench related tables

#### 9.1.1 Data dictionary tables

DD02L	Tables in SAP
DD02T	Tables description
DD03L	Field names in SAP
DD03T	Field description in SAP

#### 9.1.2 Workbench

TADIR	Directory of R/3 Repository Objects
TRDIR	System table TRDIR
TFDIR	Function Module
TLIBG	Person responsible for function class
TLIBT	Function Group Short Texts
TFTIT	Function Module Short Text
TSTC	Transaction codes in SAP
TSTCT	Transaction codes texts
T100	Message text (vb e000)
VARID	Variant data
D020T	Screen texts
TDEVCT	Development class
TDEVCT	Texts for development classes

### 9.2 Administration

#### 9.2.1 User administration

USR01	User master
USR02	Logon data
USR03	User address data
USR04	User master authorizations
USR11	User Master Texts for Profiles (USR10)
USR12	User master: Authorizations
USR12	User master authorization values
USR13	Short Texts for Authorizations
USR40	Prohibited passwords
TOBJ	Objects
TOBC	Authorization Object Classes
TPRPROF	Profile Name for Activity Group
DEVACCESS	Table for development user

#### 9.2.2 Batch input queue

APQD	DATA DEFINITION Queue
APQI	Queue info definition

#### 9.2.3 Job processing

TBTCO	Job status overview table
TBTCP	Batch job step overview

**9.2.4 Spool**

TSP02 Spool: Print requests

**9.2.5 Runtime errors**

SNAP Runtime errors

**9.2.6 Message control**

TNAPR Processing programs for output  
 NAST Message status  
 NACH Printer determination

**9.2.7 EDI**

EDIDC Control record  
 EDIDD Data record  
 EDID2 Data record 3.0 Version  
 EDIDS EDI status record  
 EDPAR Convert External < > Internal Partner Number  
 EDPVW EDI partner types  
 EDPI1 EDI partner profile inbound  
 EDPO1/2/3 EDI partner profile outbound

**9.2.8 Change documents**

CDHDR Change document header  
 CDPOS Change document position  
 JCDS Change Documents for System/User Statuses (Table JEST)

**9.2.9 Reporting tree table**

SERPTREE Reporting: tree structure

**9.2.10 LIS structure/control tables**

TMC4 Global Control Elements: LIS Info Structure HR

**9.3 Settings**

T582A Infotypes: Customer-Specific Settings

**9.4 Master data**

T527X Organizational Units  
 T528T Position Texts  
 T554T Attendance and Absence Texts  
 T501 Employee group  
 T503 Employee group, subgroup  
 T503K Employee subgroup  
 T510N Pay Scales for Annual Salaries (NA)  
 T549A Payroll Accounting Areas  
 T750X Vacancy

**9.5 Infotypes**

PA0001 Org. Assignment  
 PA0002 Personal Data  
 PA0006 Addresses  
 PA0007 Planned Working Time  
 PA0016 Contract elements  
 PA0008 Basic pay  
 PA0105 Communications  
 PA1007 Vacancies  
 PA1035 Training

PA2001 Absences

## 10 FI/CO

### 10.1 FI :

#### 10.1.1 Master data

SKA1	Accounts
BNKA	Bank master record

#### 10.1.2 Accounting documents // indices

BKPF	Accounting documents
BSEG	item level
BSID	Accounting: Secondary index for customers
BSIK	Accounting: Secondary index for vendors
BSIM	Secondary Index, Documents for Material
BSIP	Index for vendor validation of double documents
BSIS	Accounting: Secondary index for G/L accounts
BSAD	Accounting: Index for customers (cleared items)
BSAK	Accounting: Index for vendors (cleared items)
BSAS	Accounting: Index for G/L accounts (cleared items)

#### 10.1.3 Payment run

REGUH	Settlement data from payment program
REGUP	Processed items from payment program

### 10.2 CO :

TKA01	Controlling areas
TKA02	Controlling area assignment
KEKO	Product-costing header
KEPH	Cost components for cost of goods manuf.
KALO	Costing objects
KANZ	Sales order items - costing objects

#### 10.2.1 Cost center master data

CSKS	Cost Center Master Data
CSKT	Cost center texts
CRCO	Assignment of Work Center to Cost Center

#### 10.2.2 Cost center accounting

COSP	CO Object: Cost Totals for External Postings
COEP	CO Object: Line Items (by Period)
COBK	CO Object: Document header
COST	CO Object: Price Totals

## 11 Sales and Distribution (SD)

VBFA	Document flow (alg.)
VTFA	Flow shipping documents

### 11.1 Sales order :

VBAK	Header data
VBAP	Item data
VBPA	Partners in sales order
VBKD	Sales district data

VBEP Data related to line items, delivery lines

**11.2 Billing document :**

VBK header data  
 VBRP Item data

**11.3 Shipping :**

VTTK Shipment header  
 VTPP Shipment item  
 VTTS Stage in transport  
 VTSP Stage in transport per shipment item  
 VTPA Shipment partners  
 VEKP Handling Unit - Header Table  
 VEPO Packing: Handling Unit Item (Contents)

**11.4 Delivery :**

LKP Delivery header  
 LIPS Delivery item

**11.5 Pricing :**

KONH Conditions header  
 KONP Conditions items  
 KONV Procedure ( billing doc or sales order)  
 KOND

**11.6 contracts :**

VEDA Contract data



## 12 Warehouse Management (WM)

### 12.1 Transfer requirement

LTBK	Transfer requirement - header
LTBP	Transfer requirement - item

### 12.2 Transfer order

LTAK	Transfer order - header
LTAP	Transfer order - item

### 12.3 Master data - stock positions

LQUA	Quants
------	--------

### 12.4 Inventory documents in WM

LINK	Inventory document header
LINP	Inventory document item
LINV	Inventory data per quant